

Regent Park Community Centre



Community Recreation Centre + Employment Centre

**Community Recreation Centre + Employment Centre
Nelson Mandela Park Public School, Blevin's Childcare**

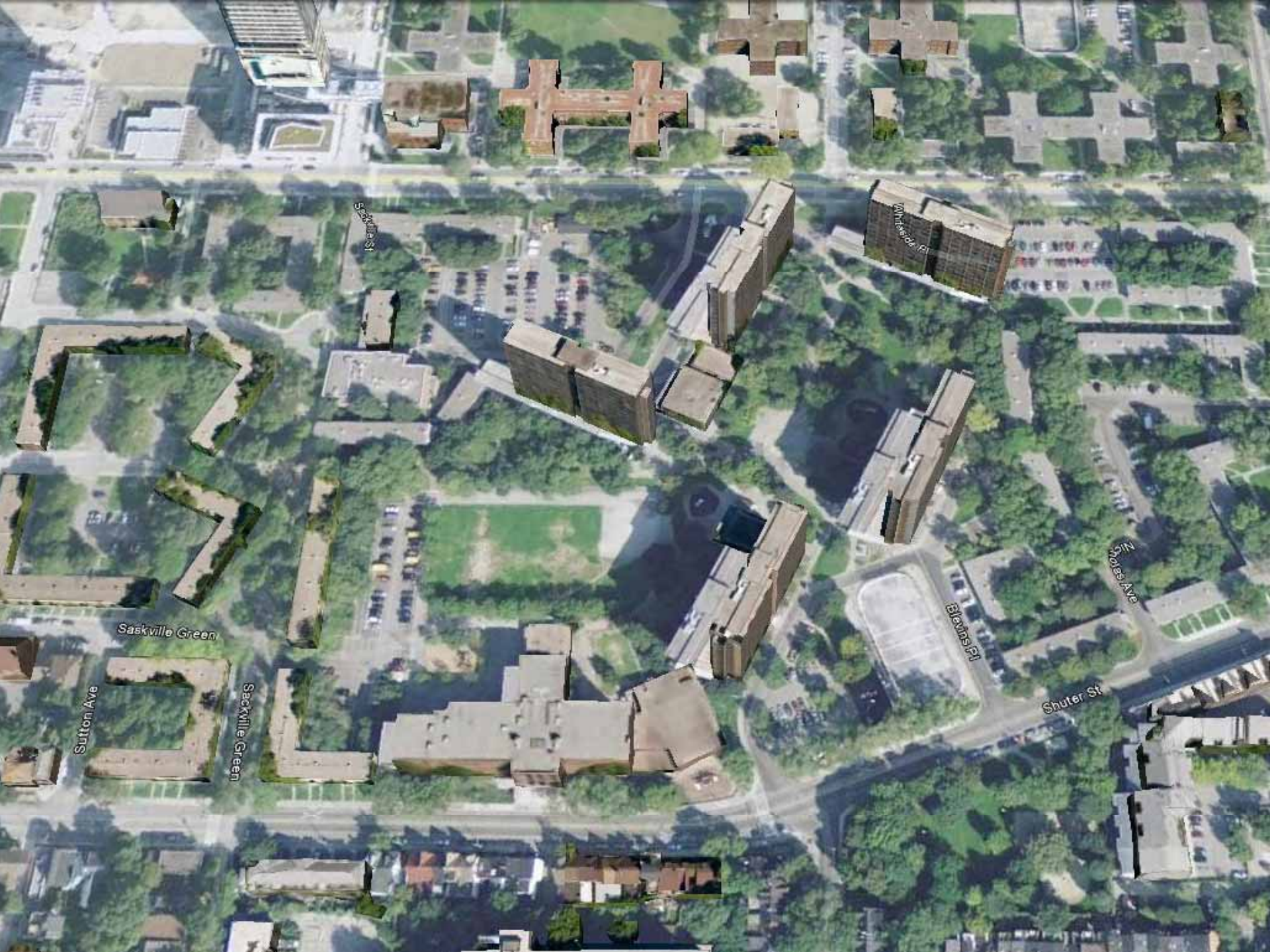
Design Options Workshop
March 2010

Agenda – 7:00pm to 9:00pm

- Welcome & Introductions
- Summary of Brainstorming Workshop Outcomes
- Site Design Approach
- Community Centre Design Options
- Discussion
- Closing Remarks

How to Get Involved? (Community Consultation Schedule):

Jan 4, 2010	Agency Group Meeting:	Gardening and Food Access Work Group
Jan 21, 2010	Agency Group Meeting:	SCAARP
Jan 26, 2010	Agency Group Meeting:	SDP Meeting
Feb 4, 2010	Agency Group Meeting:	TDSB Nelson Mandela Park School LSCDT
Feb 10, 2010	Focus Group Meeting:	Existing Recreation Centre Users
Feb 17, 2010	Focus Group Meeting:	Regent Park & Other Area Residents
Feb 20, 2010	Focus Group Meeting:	Regent Park & Other Area Residents
Feb 25, 2010	Design Brainstorming Workshop	
March 10, 2010	Design Options Presentation Workshop (1 st of 2 meetings)	
March 13, 2010	Design Options Presentation Workshop (2 nd of 2 meetings – if required)	
April 7, 2010	Presentation of Schematic Design – Open House/Presentation	



Saskville Green

Sutton Ave

Sackville Green

Saskatoon St

Blacks Pt

Blacks Pt

Blacks Ave

Shuter St

Brainstorming Workshop Feedback

Site

- Traffic/Parking
- Access
- Safety
- Gardens
- Play for all ages

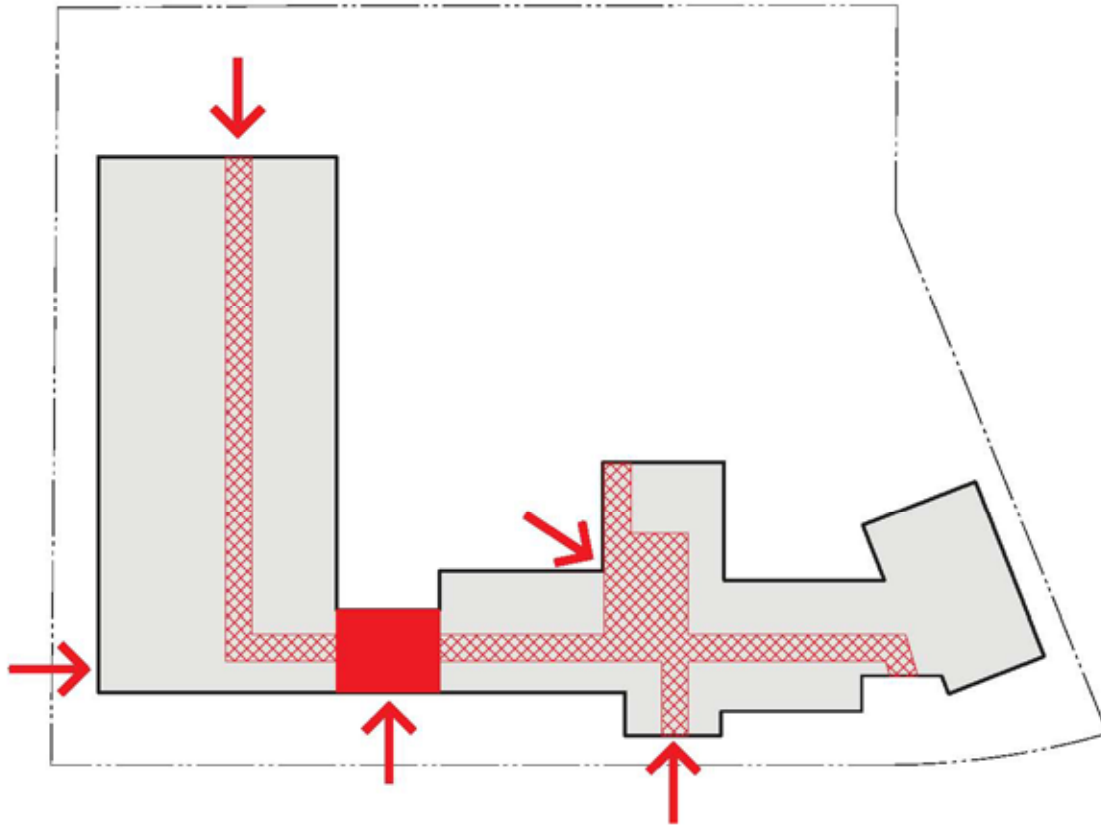
Community Hub

- All cultures
- All ages
- Regent Park & Surrounding Neighbourhoods

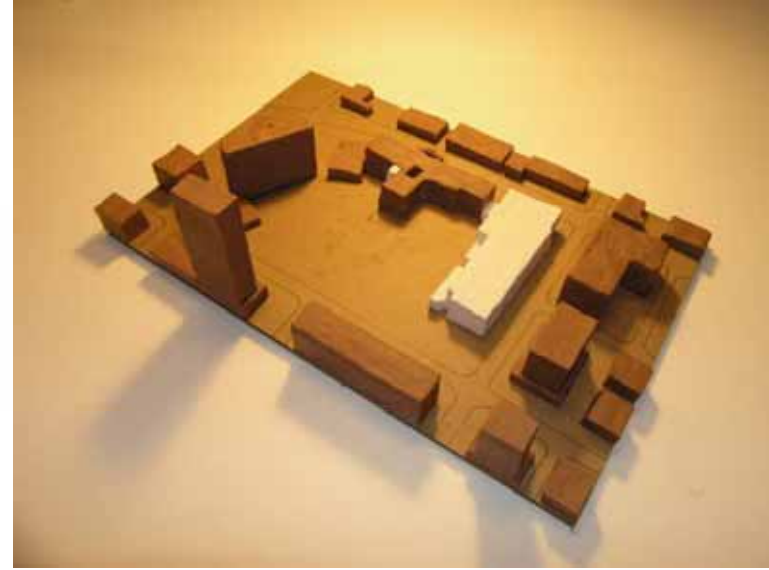
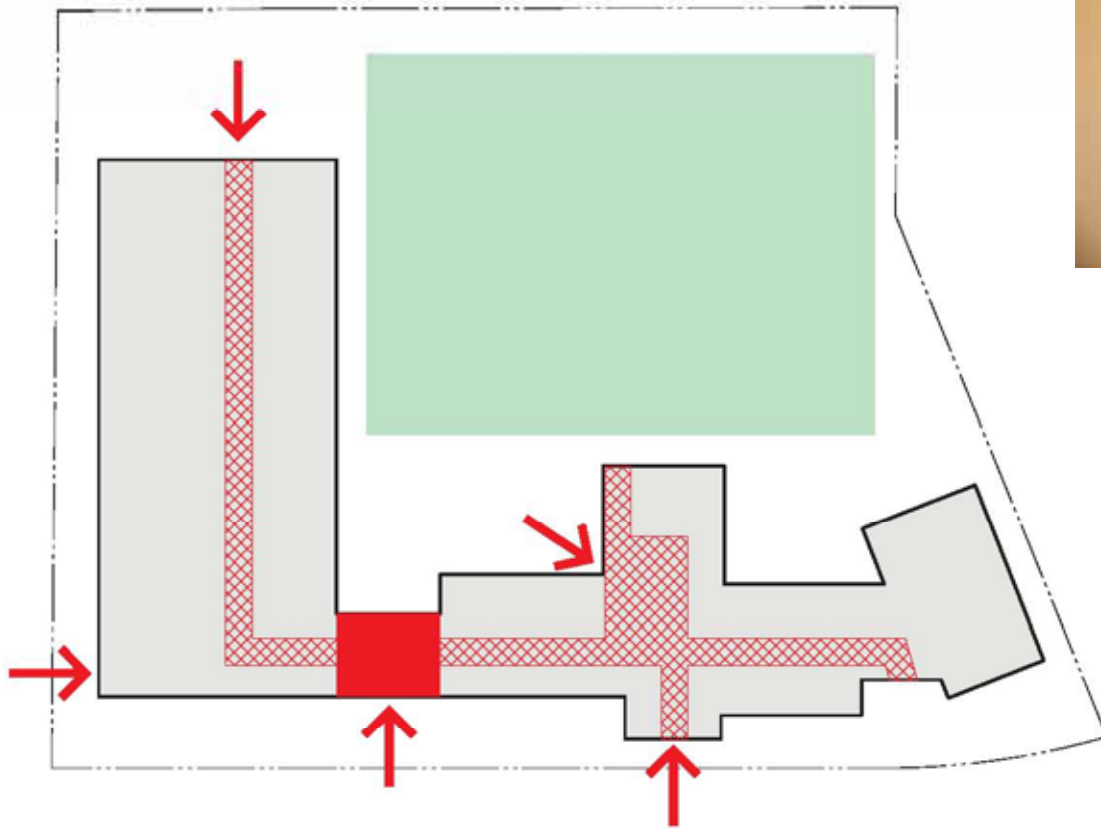
Building

- Safe
- Accessible
- Transparent/Respectful
- Multi-use
- Flexible/Adaptable
- Easy to maintain
- Play/Learn/Relax/Socialize

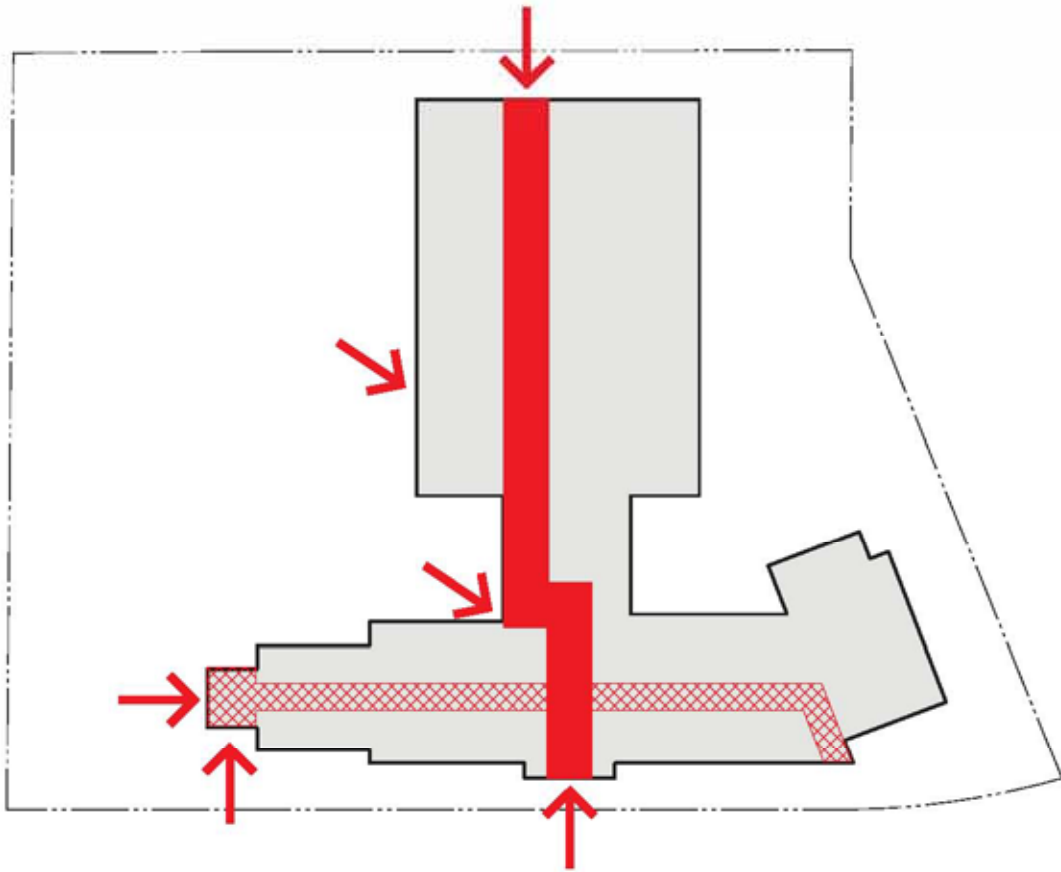
Site Design Approach



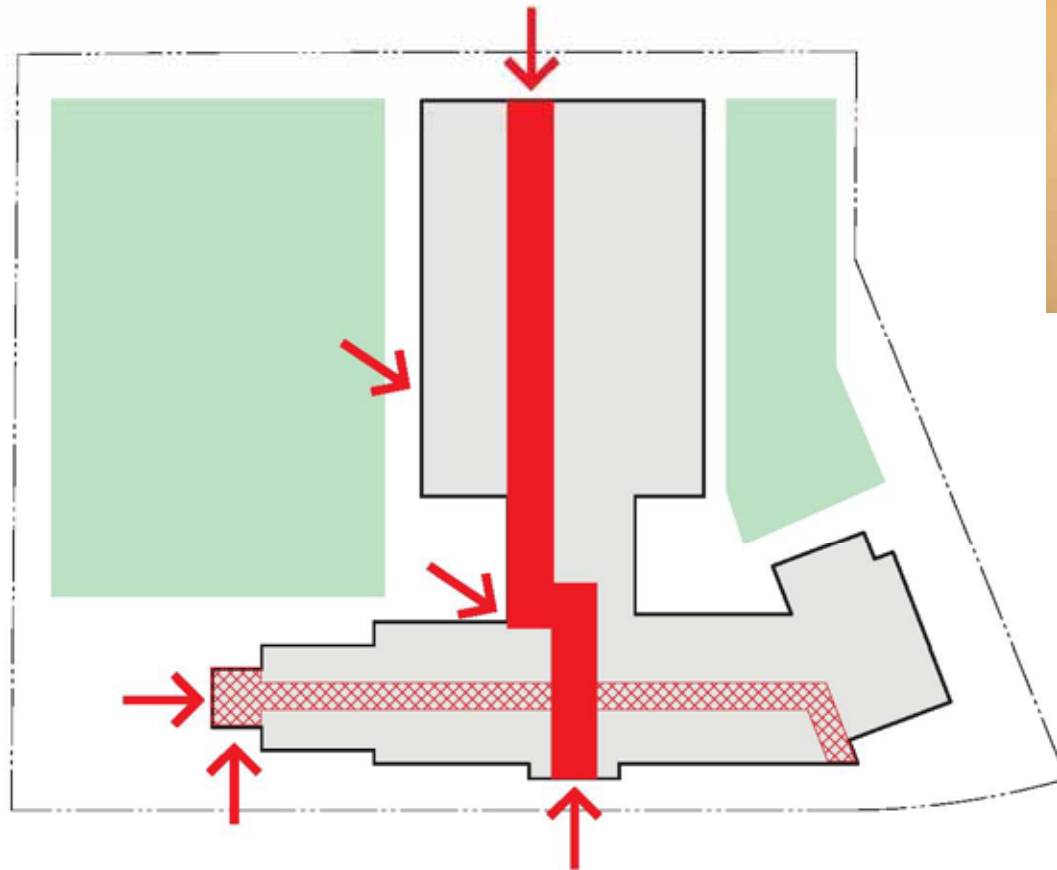
Hub as a 'Hinge'



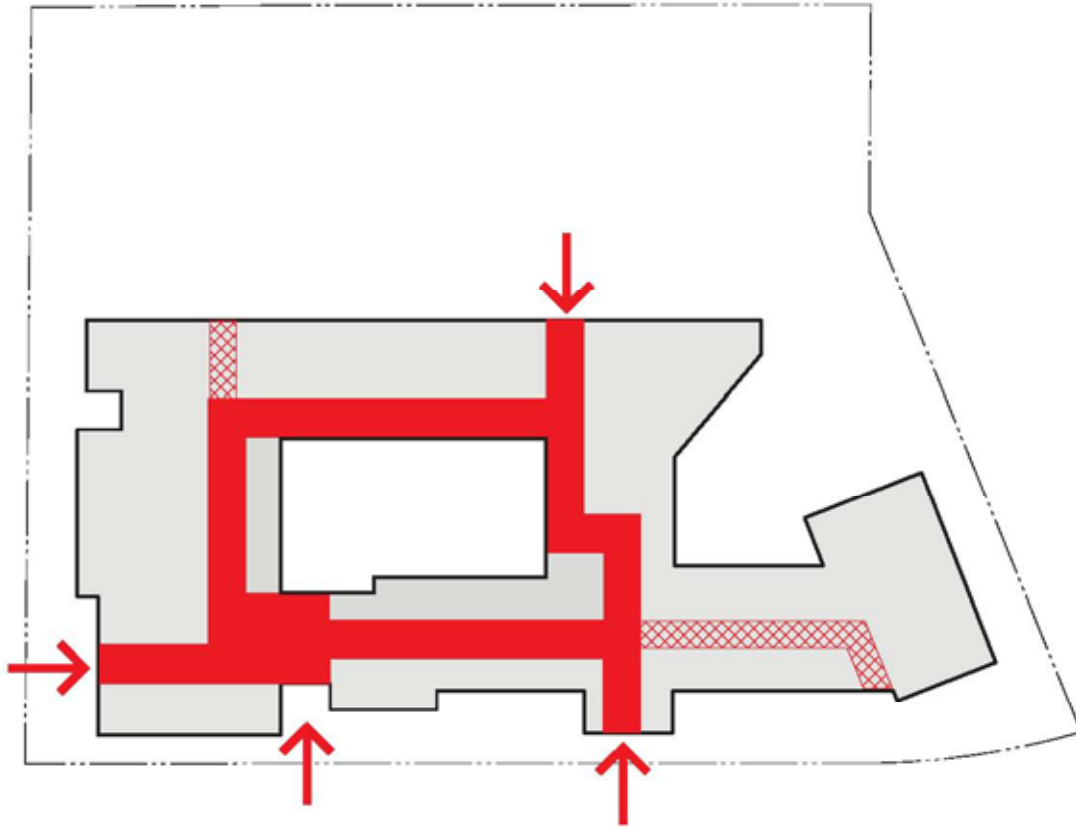
Hub as a 'Hinge'



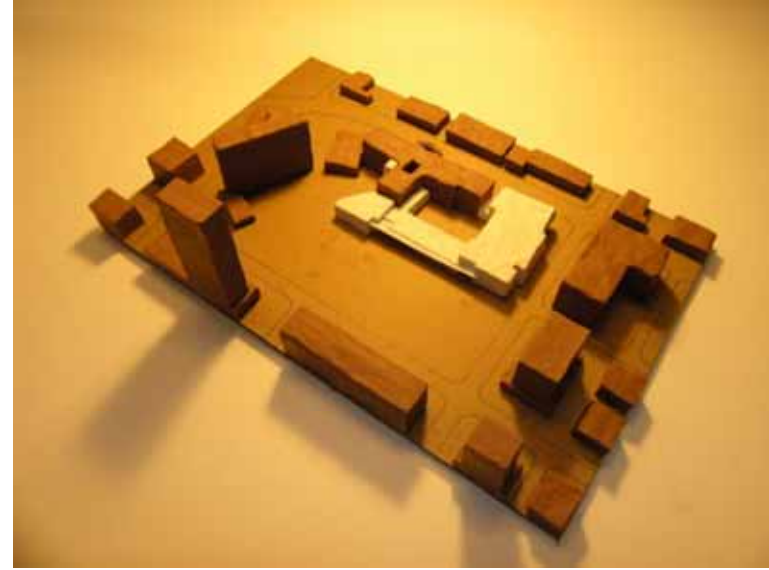
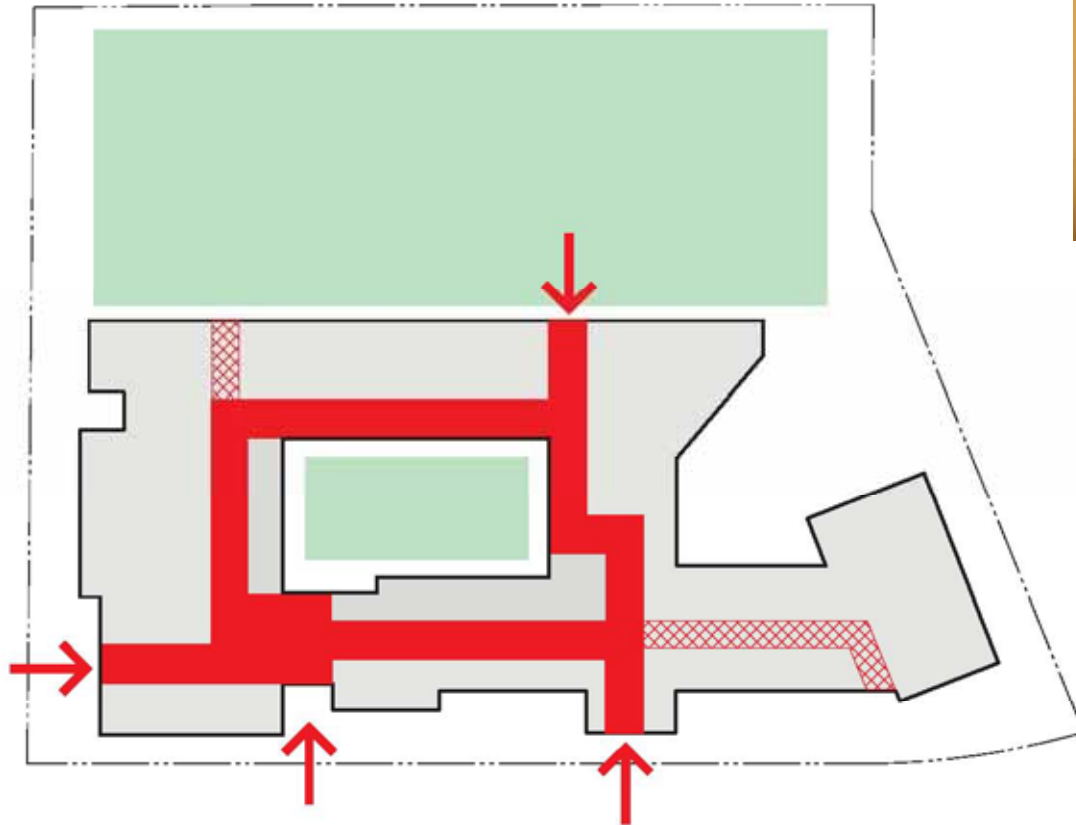
Hub as a 'Spine' of activities



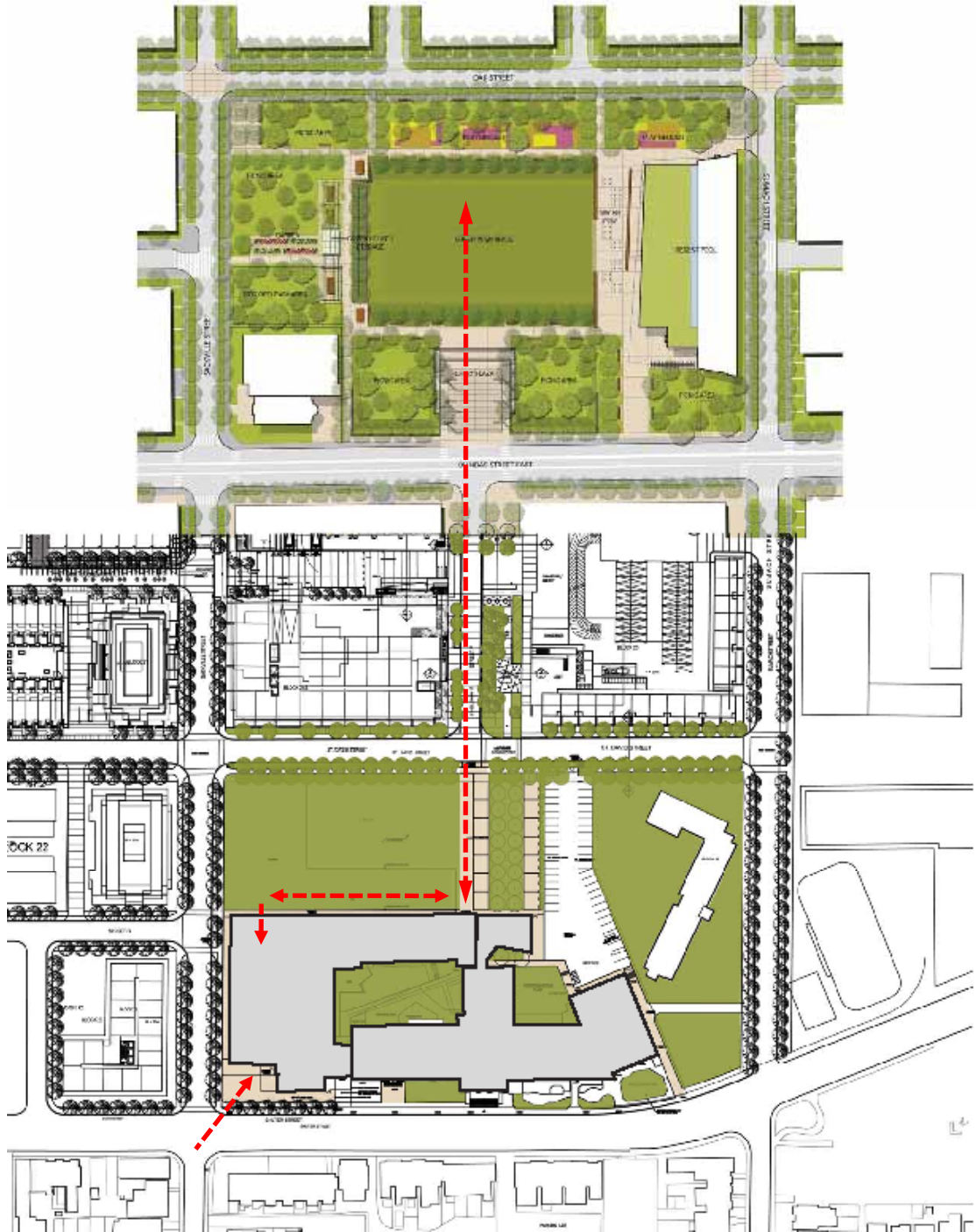
Hub as a 'Spine' of activities

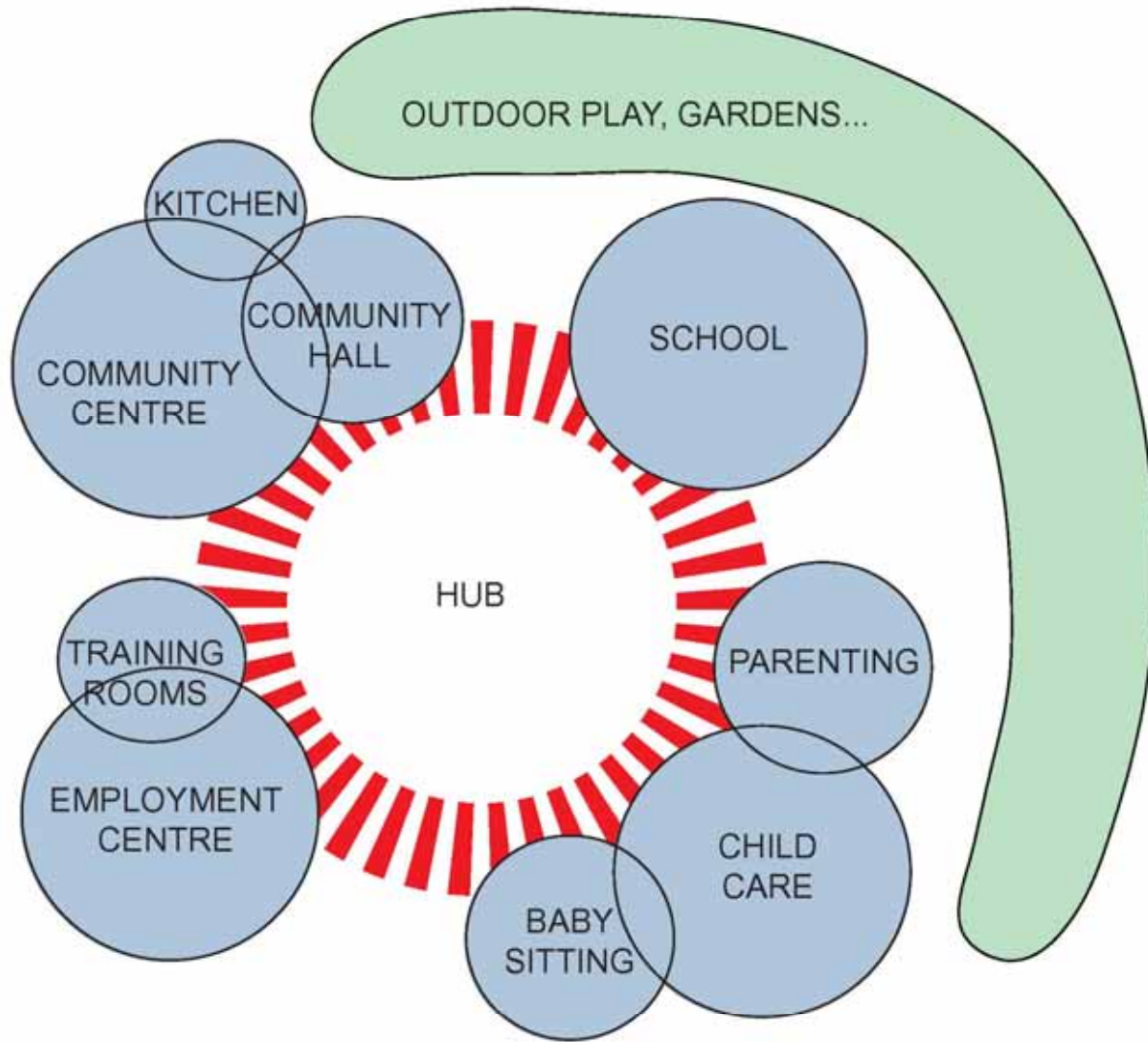


Hub as a 'Necklace' of activities

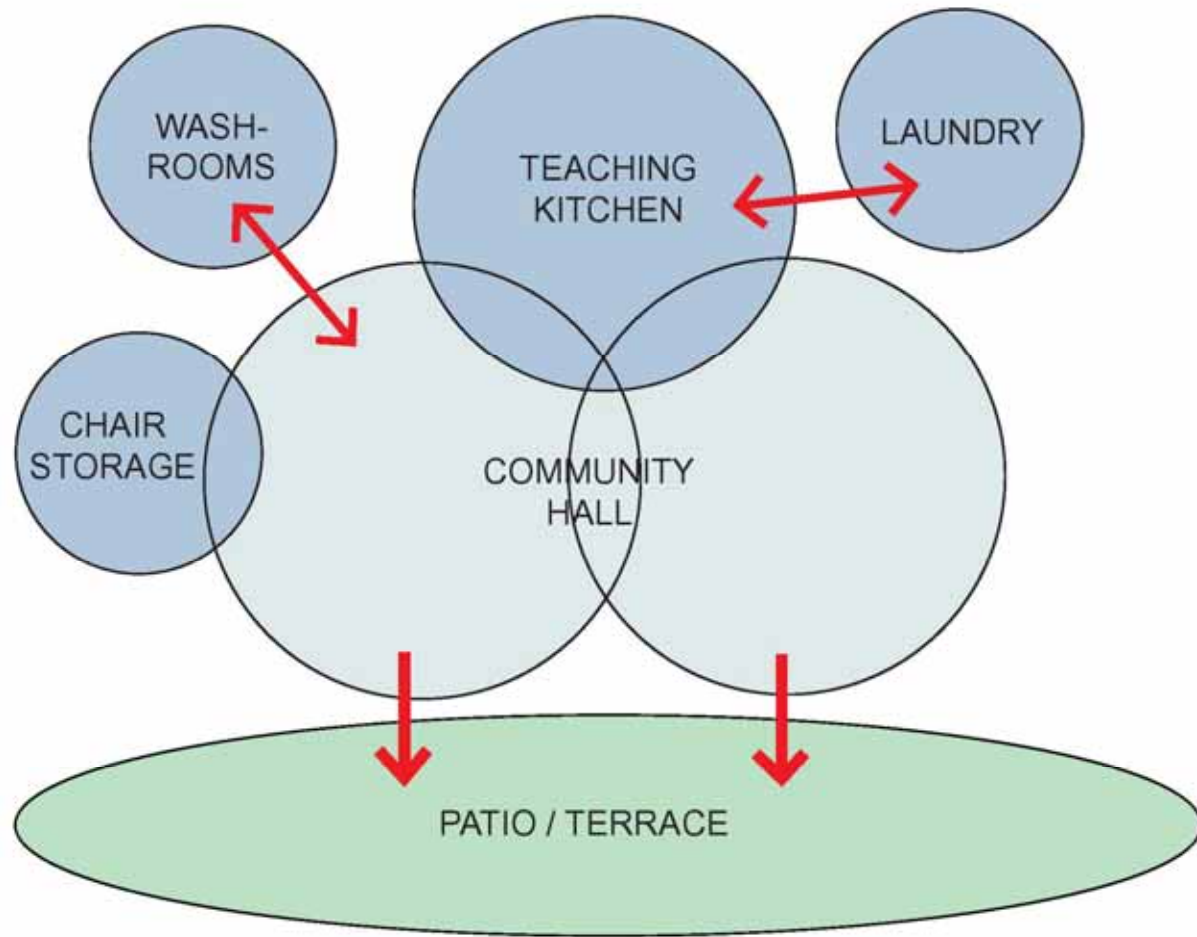


Hub as a 'Necklace' of activities

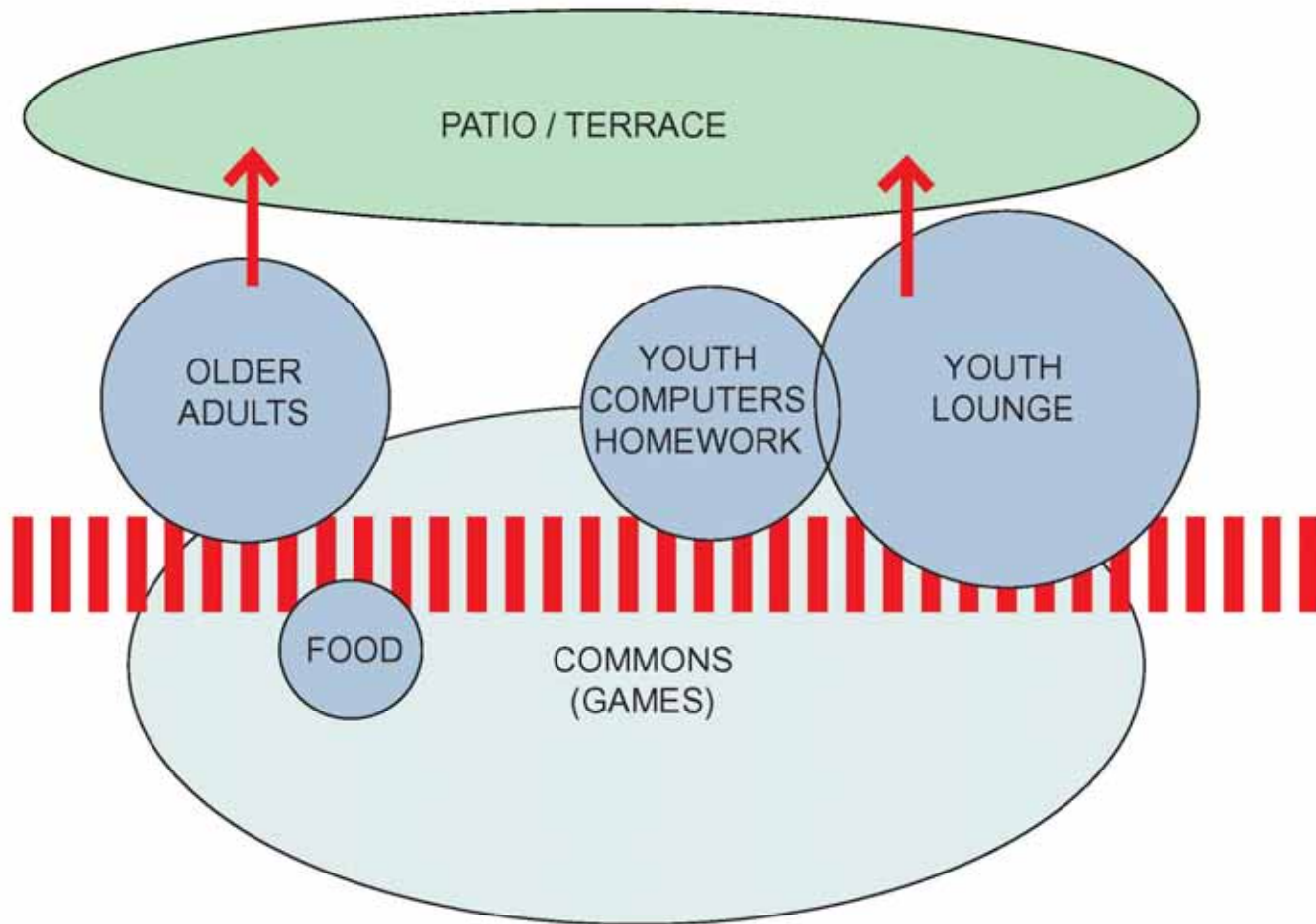




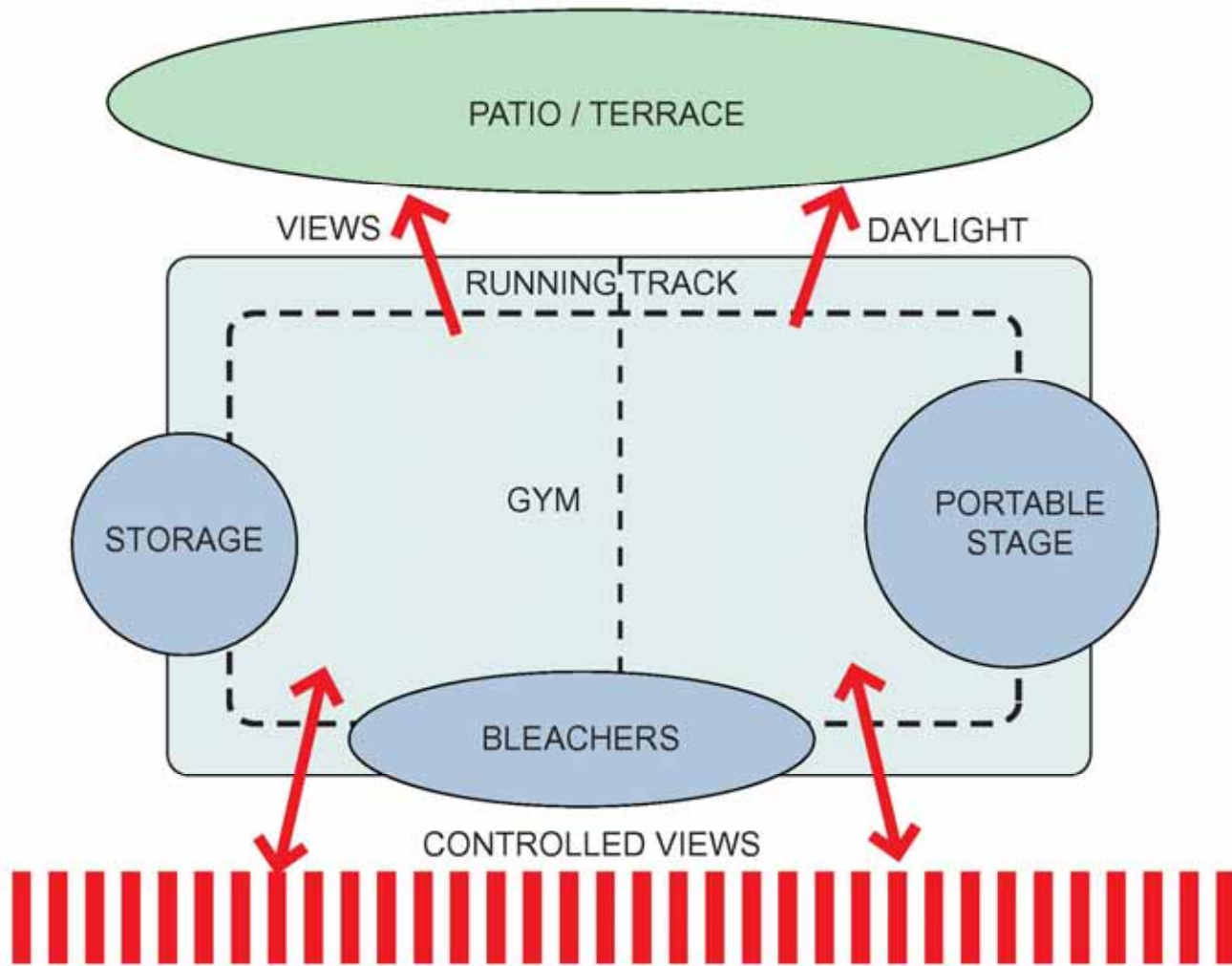
The Hub



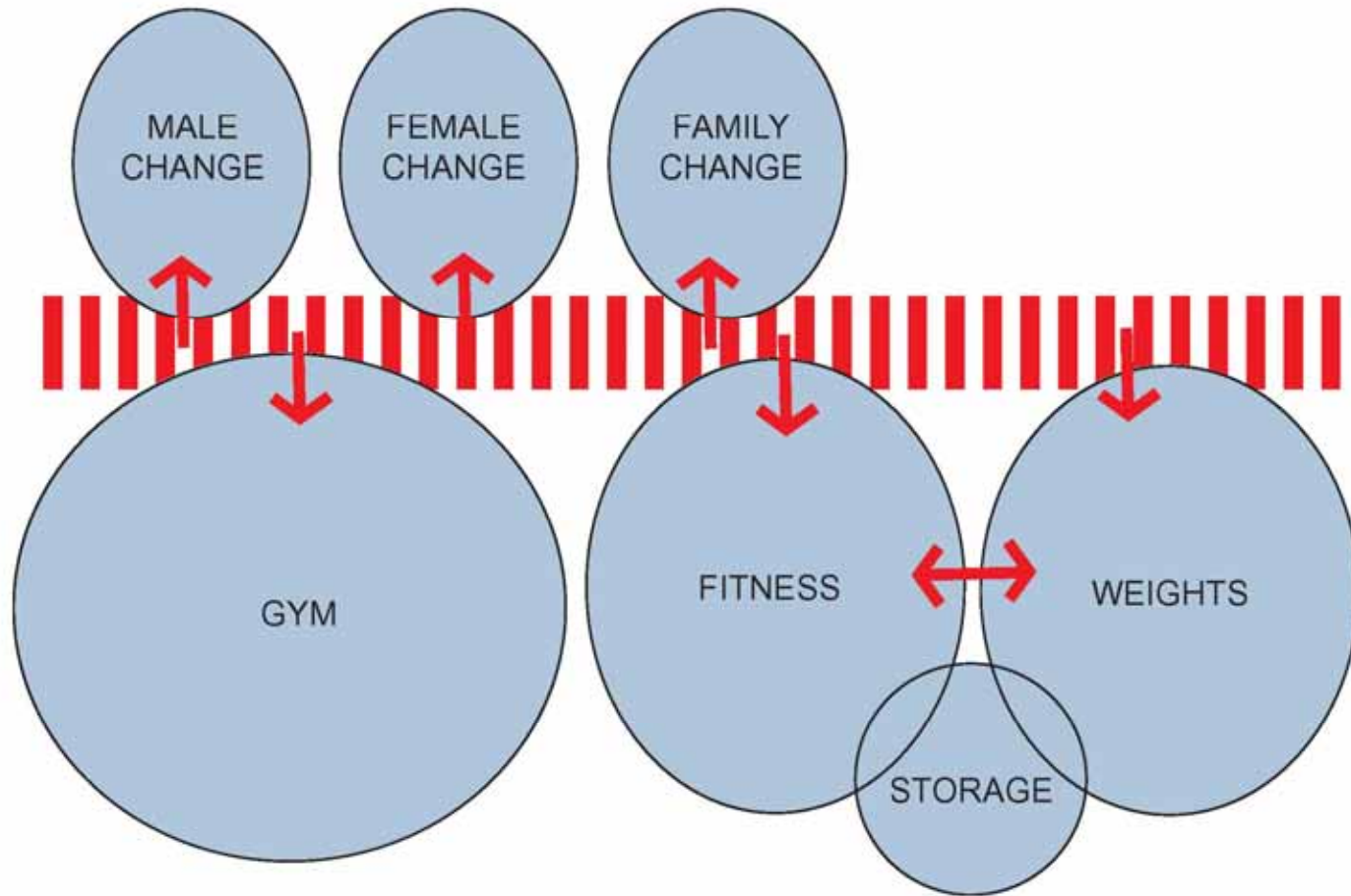
Community Hall



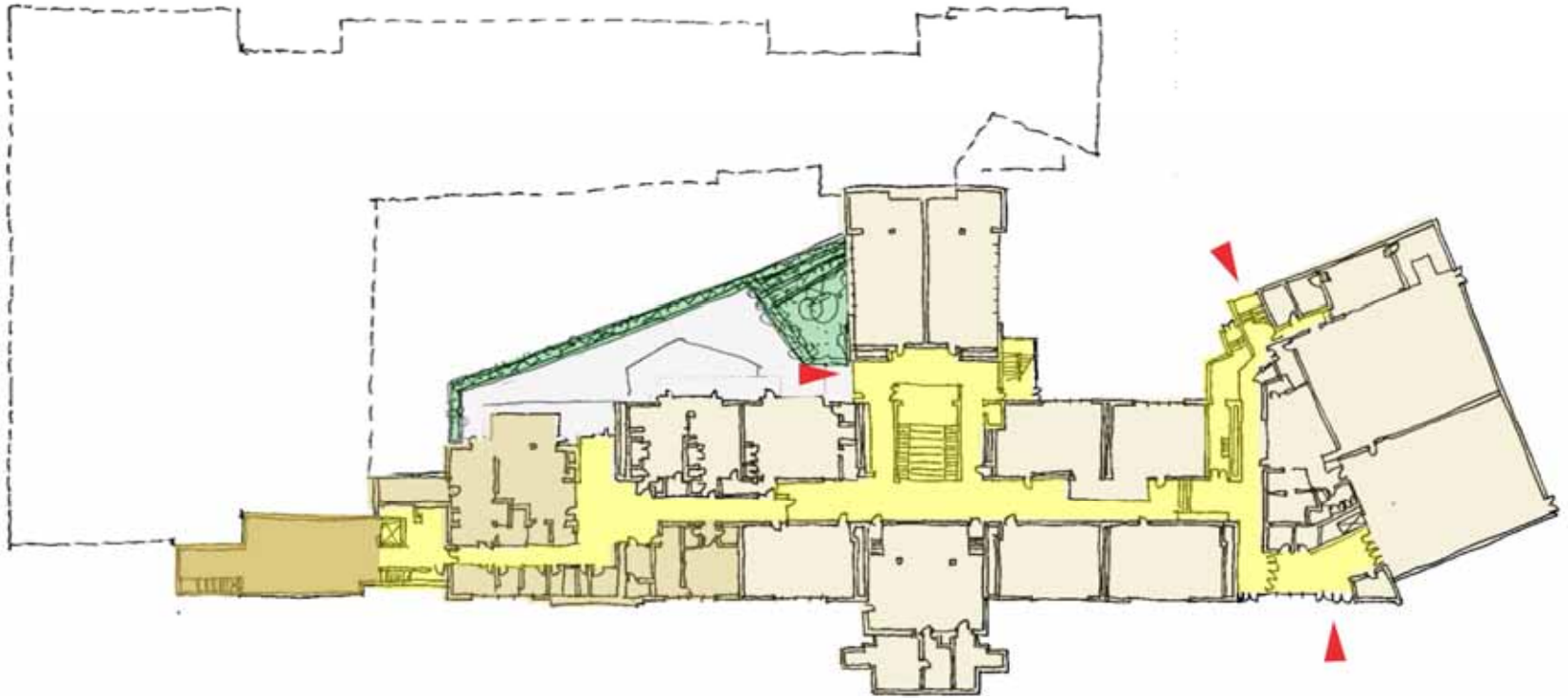
Lounge Spaces



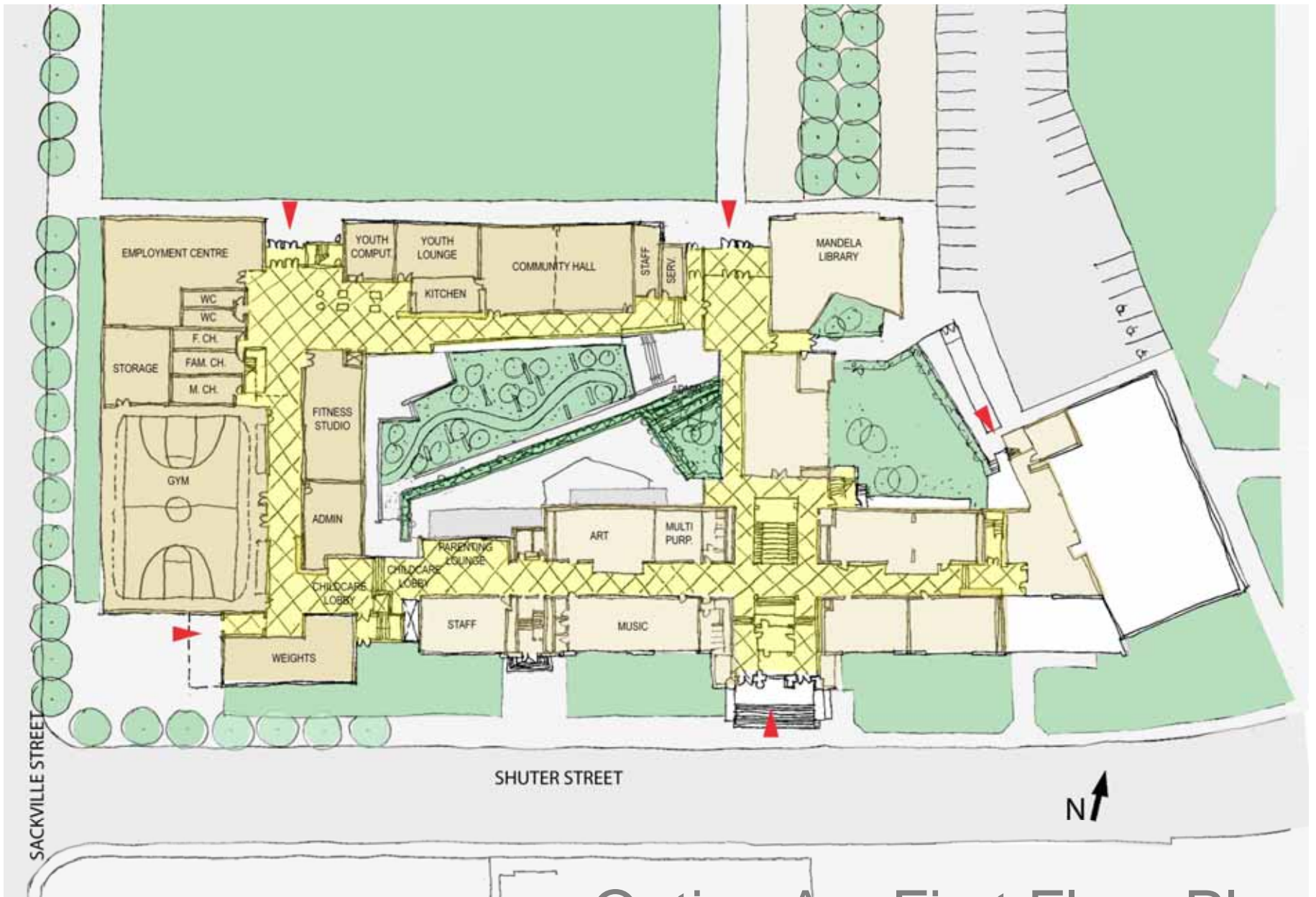
Gymnasium



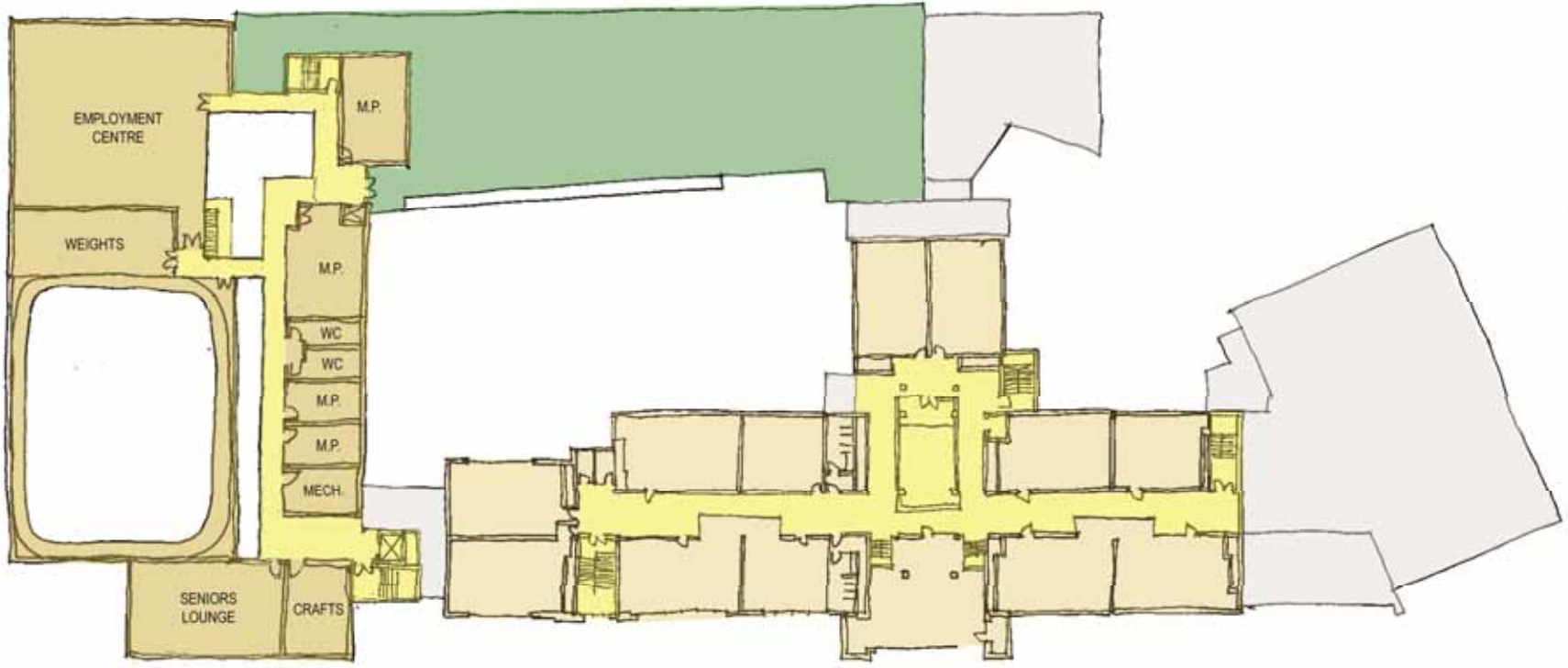
Recreation



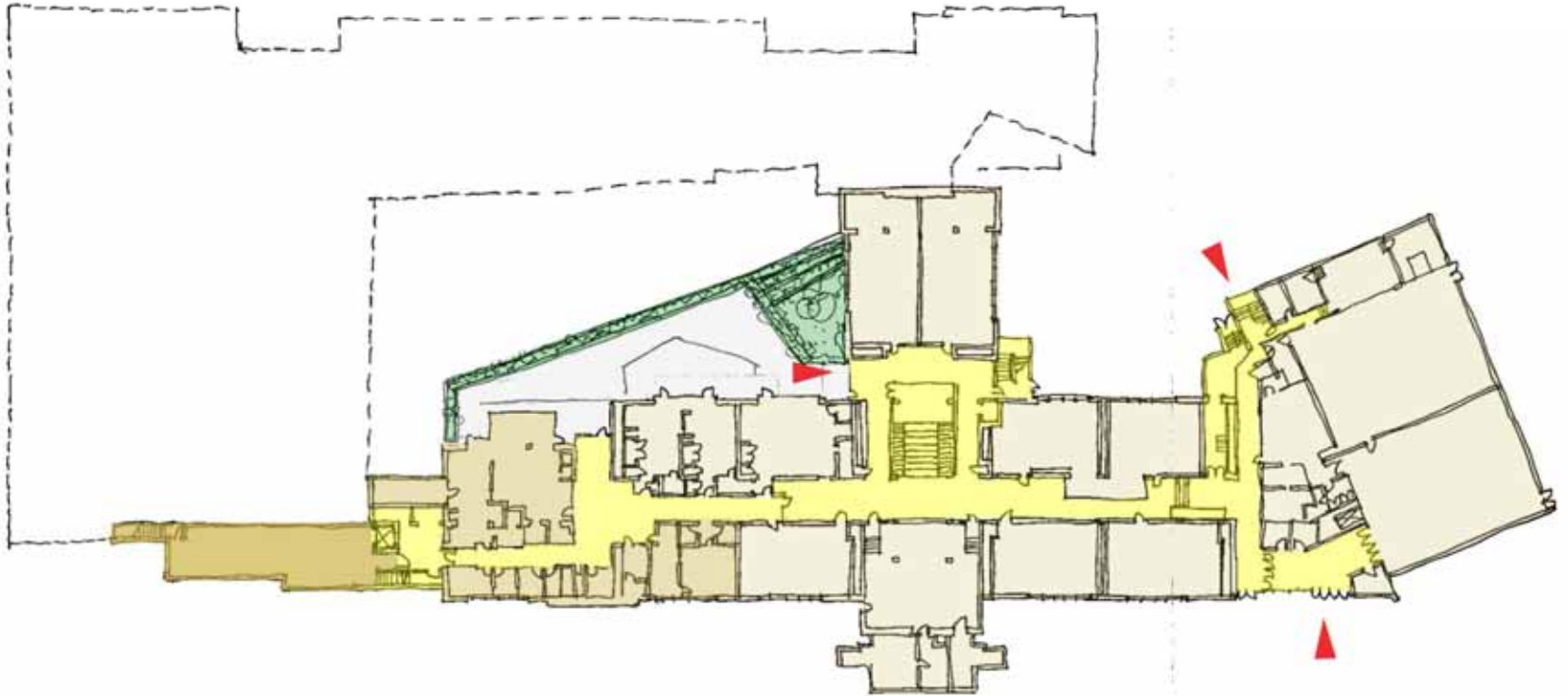
Option A – Ground Floor Plan



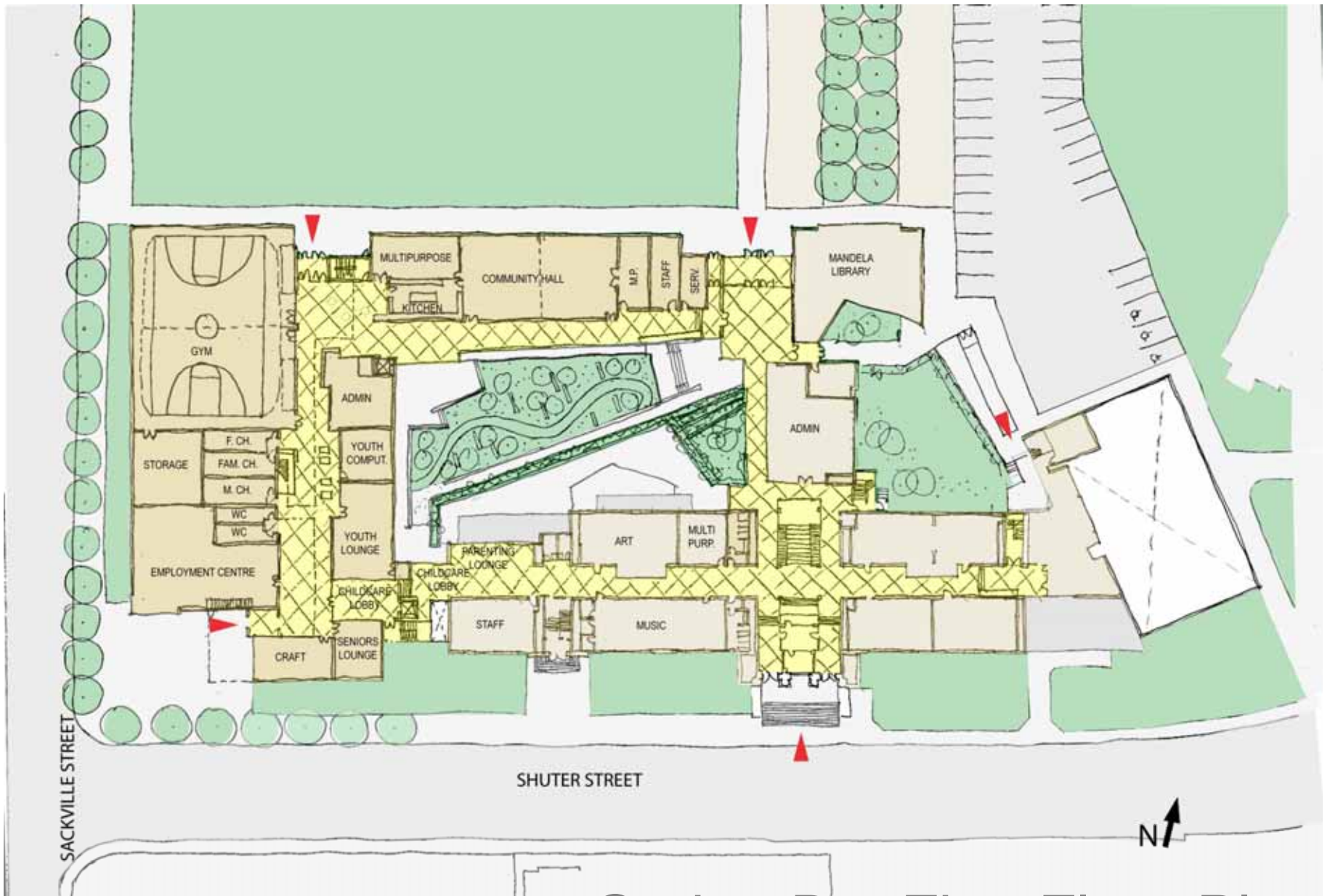
Option A – First Floor Plan



Option A – Second Floor Plan



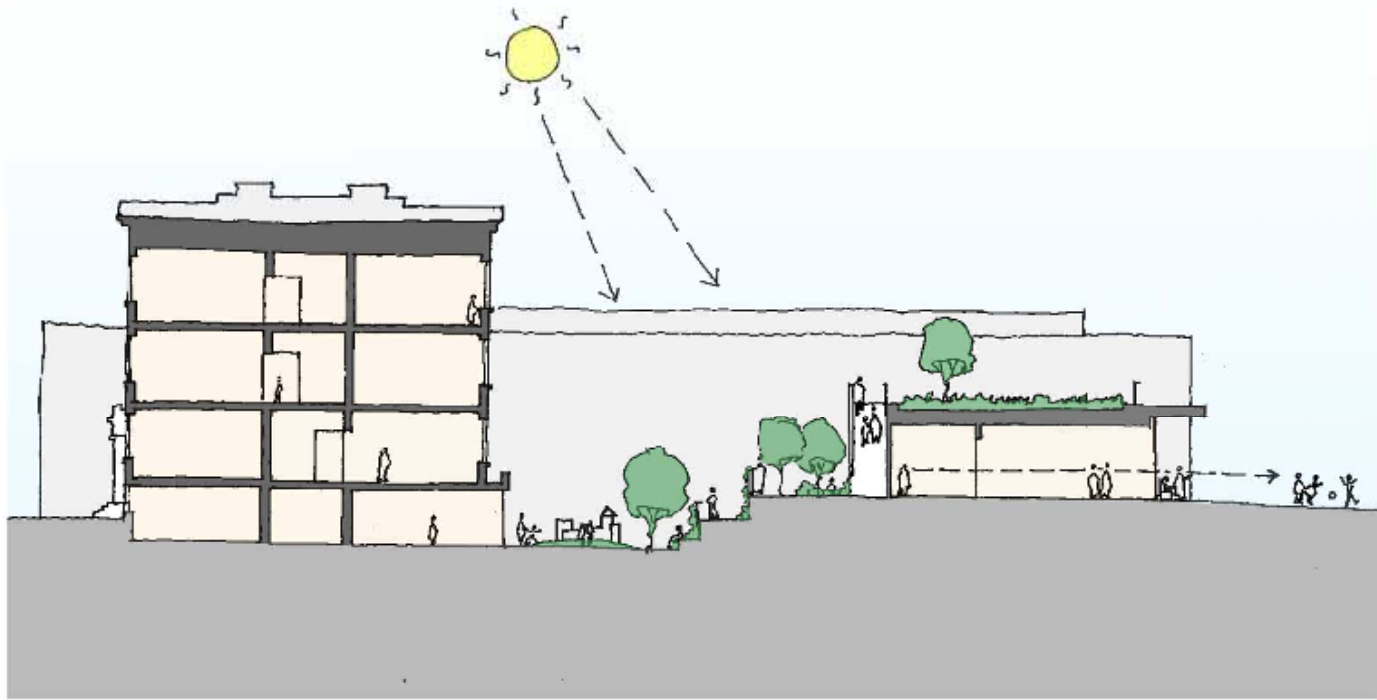
Option B – Ground Floor Plan



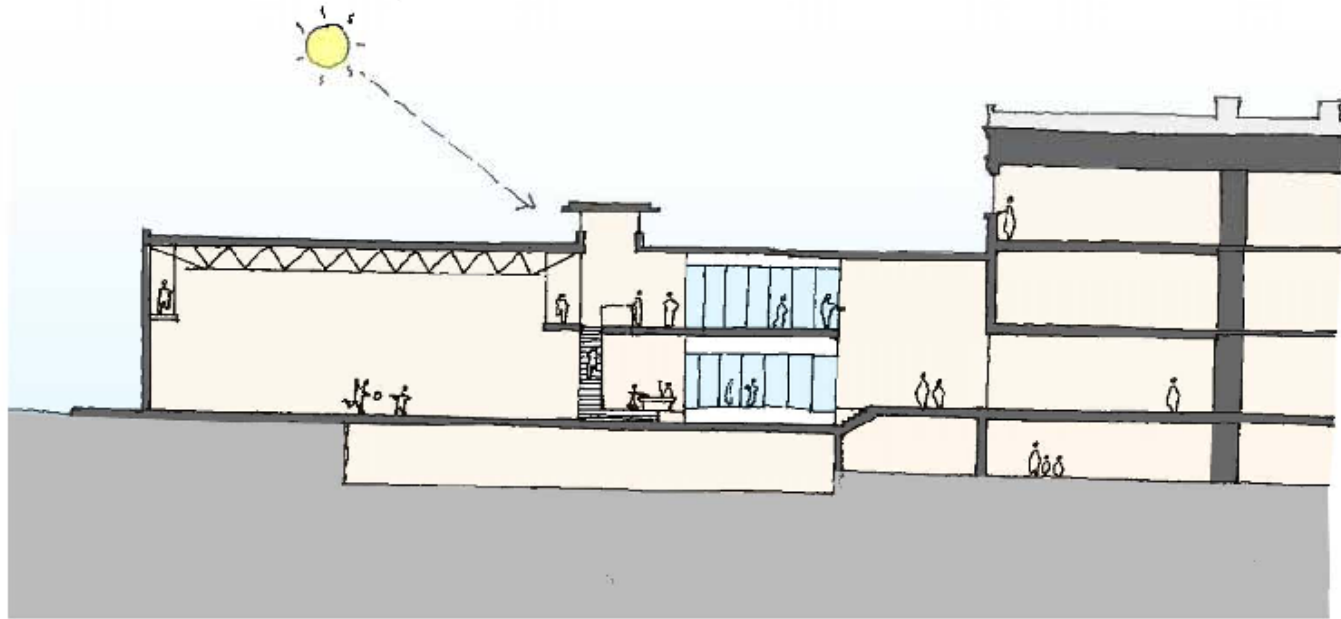
Option B – First Floor Plan



Option B – Second Floor Plan



Building Section



Building Section

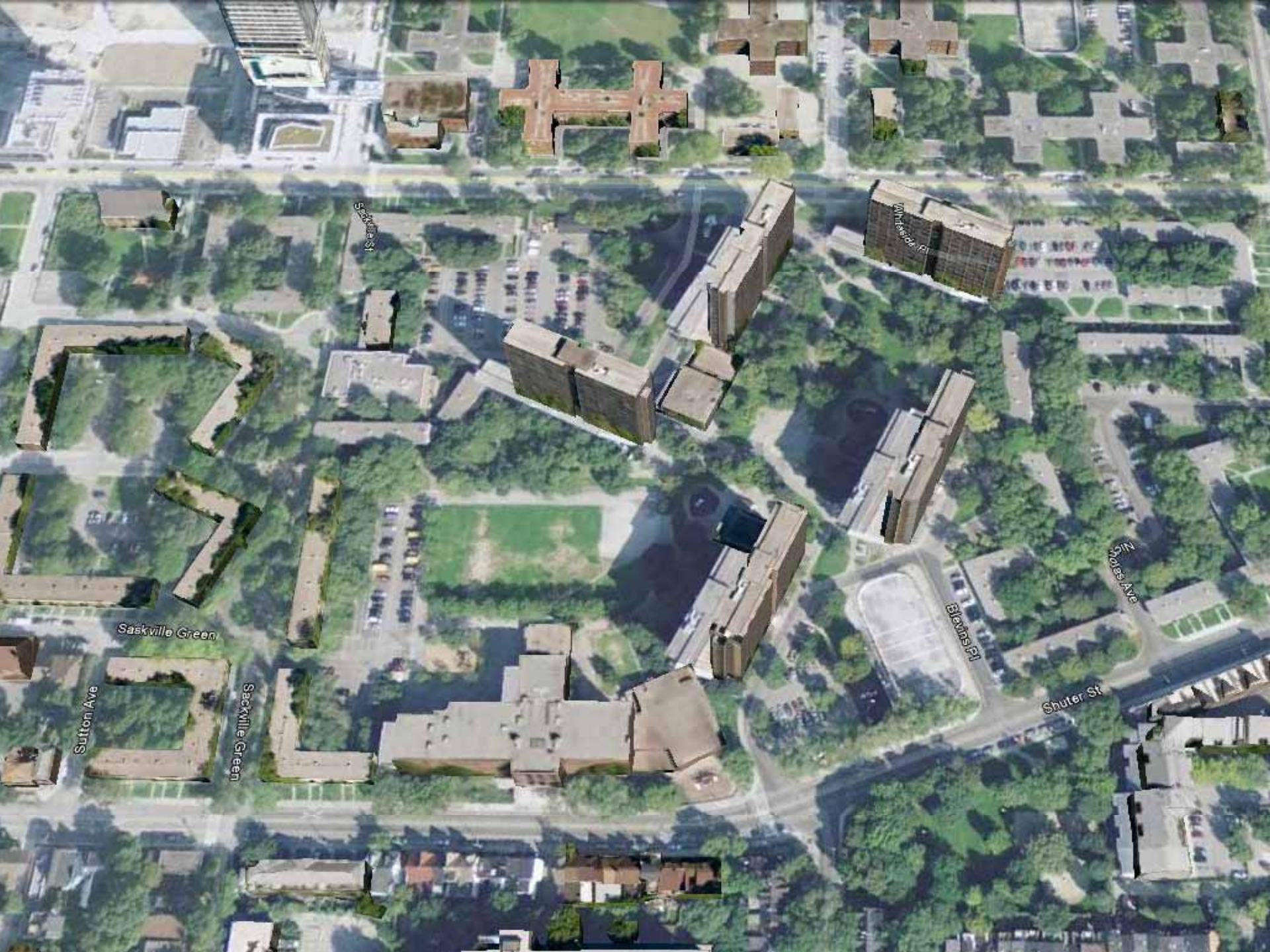












Saskville Green

Sutton Ave

Sackville Green

Saskatoon St

Bluffs Pl

Shuter St

Boles Ave

Windsor Pl



Shuter St

Sackville Street

Summach Street

David Street

Gas Street East

Street P

unds

Discussion

How to Get Involved? (Community Consultation Schedule):

Jan 4, 2010	Agency Group Meeting:	Gardening and Food Access Work Group
Jan 21, 2010	Agency Group Meeting:	SCAARP
Jan 26, 2010	Agency Group Meeting:	SDP Meeting
Feb 4, 2010	Agency Group Meeting:	TDSB Nelson Mandela Park School LSCDT
Feb 10, 2010	Focus Group Meeting:	Existing Recreation Centre Users
Feb 17, 2010	Focus Group Meeting:	Regent Park & Other Area Residents
Feb 20, 2010	Focus Group Meeting:	Regent Park & Other Area Residents
Feb 25, 2010	Design Brainstorming Workshop	
March 10, 2010	Design Options Presentation Workshop (1 st of 2 meetings)	
March 13, 2010	Design Options Presentation Workshop (2 nd of 2 meetings – if required)	
April 7, 2010	Presentation of Schematic Design – Open House/Presentation	

A high-angle, close-up photograph of a diverse group of young people, including children and teenagers, smiling and laughing joyfully. They are looking upwards, creating a sense of hope and positivity. The image is in a light, monochromatic color palette.

Thank you for your input!

For more information contact: Doug Giles, City of Toronto
www.toronto.ca/civic-engagement/consultations.htm